

# SurvPC

Easy and direct capture of data in Esri® formats

*"This is an industry first. The new capability of SurvPC enables surveyors to work in the ArcGIS® system, yet with the interface they are familiar with. In the case of Esri® maps, SurvPC displays the map as saved in Arc and accesses the entire geodatabase. Features and attributes collected in the field are stored back to the geodatabase and displayed graphically with the correct symbols and linetypes."*

*Bruce Carlson*  
President, Carlson Software

## Closing the gap

There has always been a large gap between land surveyors and GIS Data professionals. Shape files were for a long time the only link between these professions. Now through **Carlson SurvPC** it is possible for the land surveyor, through a familiar interface, to work with Esri® data without conversions or data loss.

## Total freedom in hardware choice

It has never been easier to create your own configuration of software and hardware. **Carlson SurvPC** supports a wide range of instruments; RTK GNSS receivers, Total Stations, rangefinders or even a Sonar for hydrographic surveys. Choose your own platform; a robust tablet for the field or a powerful laptop for the office.

## User Interface

**Carlson SurvPC** is designed for field use under all conditions. Simple interfaces and a large virtual keyboard, has made entering data even easier.



**Work with the pioneering data collection software**

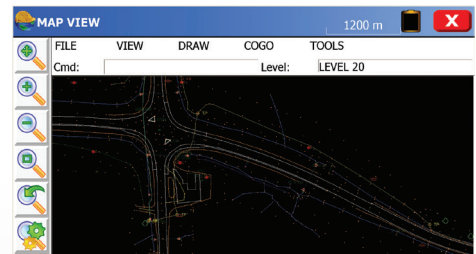
**The powerful features of SurvPC are helping you to work faster and more efficiently:**

- Store points with many features as coding (incl. auto line creation), symbols, offsets, interval measurement (time, distance, slope [GNSS])
- Stake out points, lines as well as axe, cross profiles, DTMs
- Area calculations and divisions
- volume calculation by perimeter boundary and with dem as reference surface or fixed elevation base
- DTMs: Generate using imported points, incl. breaklines and contours
- Field-to-Finish: create the complete plan during the recording of survey points
- Simple data exchange with comprehensive support of data formats including DXF, DWG, Shape, XML, DGN, ASCII, DTM; individual configurable Import/Export-Assistant
- Quick switch between base, rover and total station
- Easy feature code list administration on site incl. layers, symbols and GIS attributes
- Create points out of graphical elements (snap end point of a line, center of a line, center of a circle etc.)
- Freehand drawing in map window
- COGO features inverse, area calculation, point projection, offset...
- Other features including transformation, free station, resection
- GNSS: decoding of RTCM-messages for easy measuring in the correct coordinate system
- GNSS: support of inertial systems (IMU)
- Camera integration: assign pictures to points or lines
- Quick search uses internal GPS of data collector for prism location

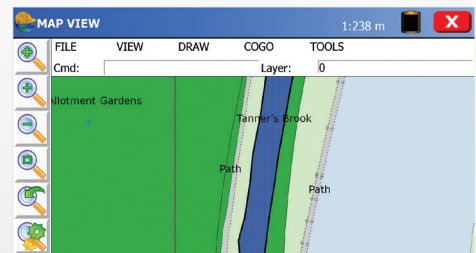
**New features in Carlson SurvPC 5.0:**

- Usage of data collector integrated compass for easy stake out
- One touch icons for easy coding
- Scan feature for robotic total stations
- Optimized memory management allows usage of bigger graphic files (DXF, DWG...)
- Easy-select target feature
- Export directly in the KML format for a fast control in GoogleEarth

The Esri® map is surprisingly sharp and clearly displayed in the field, including built-in zoom resolution, 'freeze / thaw'. This also applies to MicroStation® drawings. In both cases, there is no conversion, you work in the original map, and you can identify each feature, modify or expand through conventional snap selection. Land surveyors have access to the available Esri® maps of municipalities and water boards, utilities, state or national government, and SurvPC will automatically retrieve all map related attributes. There is no specific preparation necessary - the built-in Esri® engine reads and writes Esri® mxd documents allowing SurvPC to collect data and edit data directly into Esri® format. This makes it possible for surveyors and consultants to perform work in a uniform way for a variety of customers who make use of Esri® products, in an efficient manner.



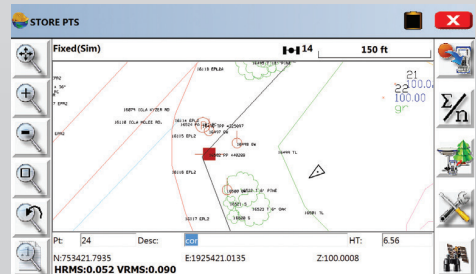
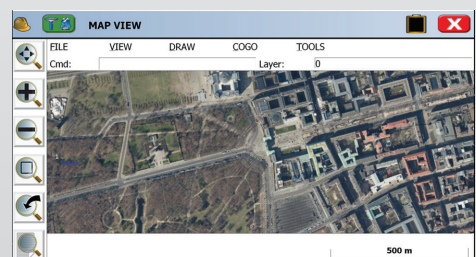
Combine and now integrate easily and quickly accurate measurements Total Station with Esri® MXD, MicroStation® DGN or AutoDesk® DWG formats.



Whether it comes to surveying dikes or water-courses, with Carlson SurvPC you have everything to perform your work.



Updating maps has never been easier. The measuring and remeasuring of boundaries or plots can now quickly and easily be achieved with Carlson SurvPC



Load DGN files and catch easily points and lines